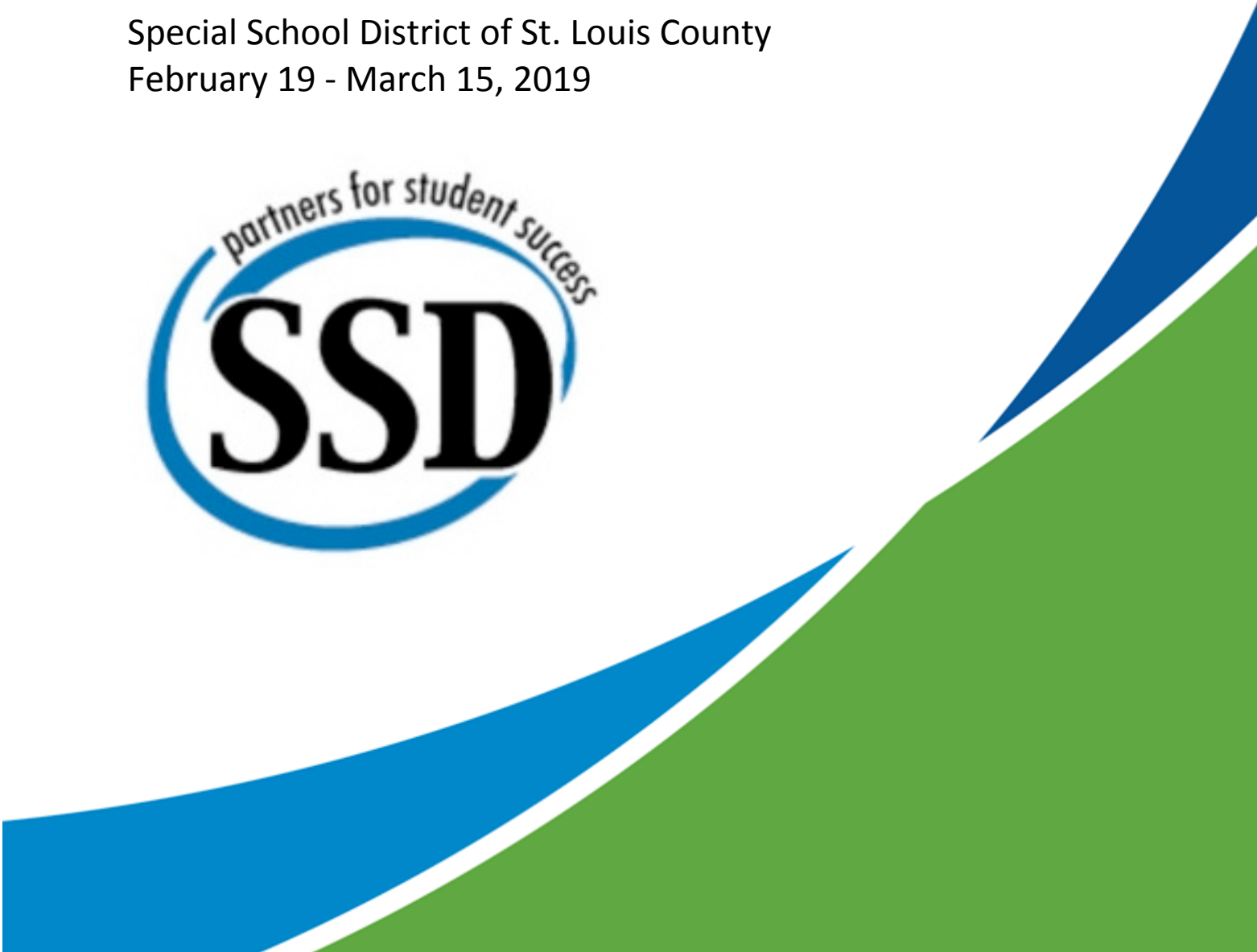


# 2018-19 Climate Survey Parents/Guardians – SSD Schools Survey Results

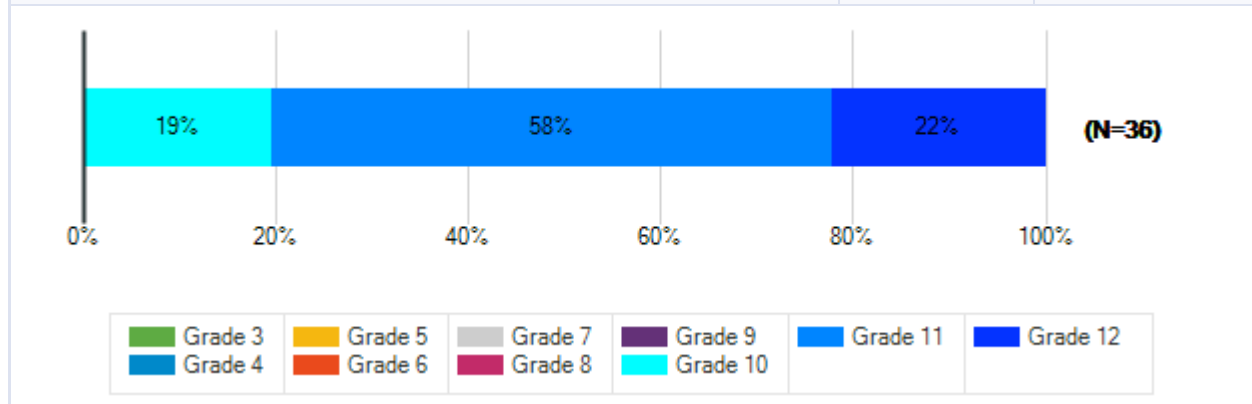
## North Technical High School-Half Day

Special School District of St. Louis County  
February 19 - March 15, 2019



**Q2. Please select your child's grade.**

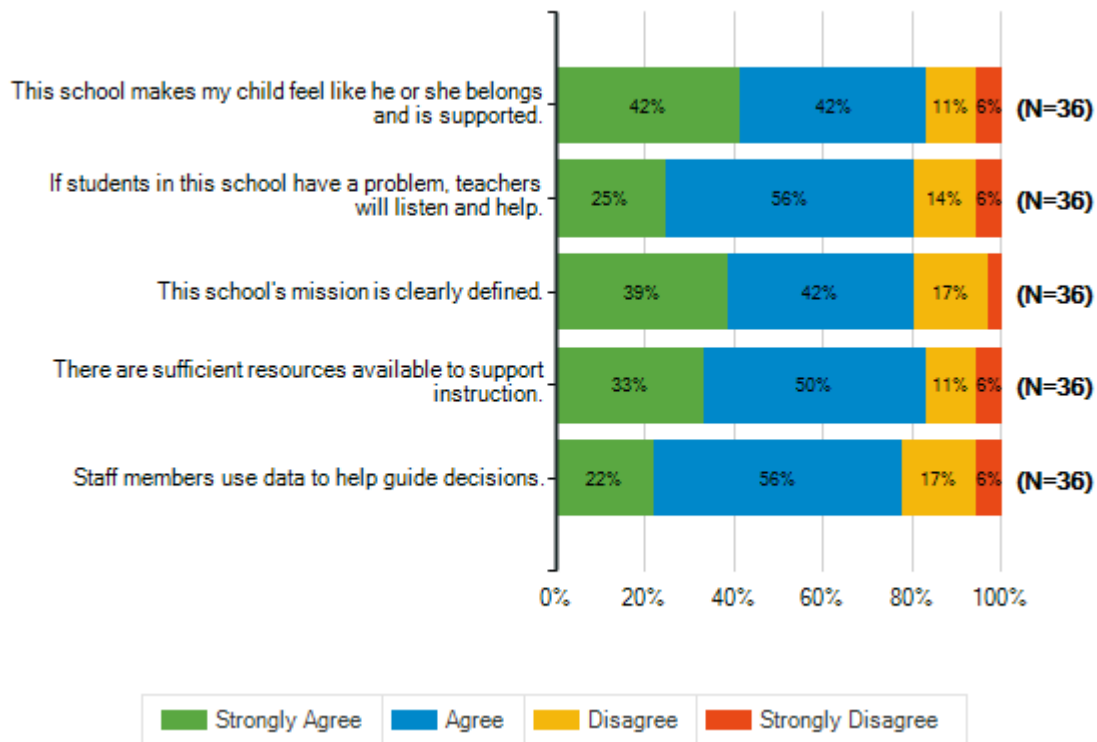
Responses	Count	%
Grade 3	0	0%
Grade 4	0	0%
Grade 5	0	0%
Grade 6	0	0%
Grade 7	0	0%
Grade 8	0	0%
Grade 9	0	0%
Grade 10	7	19%
Grade 11	21	58%
Grade 12	8	22%
<b>Total Responses</b>	<b>36</b>	



**School Satisfaction**

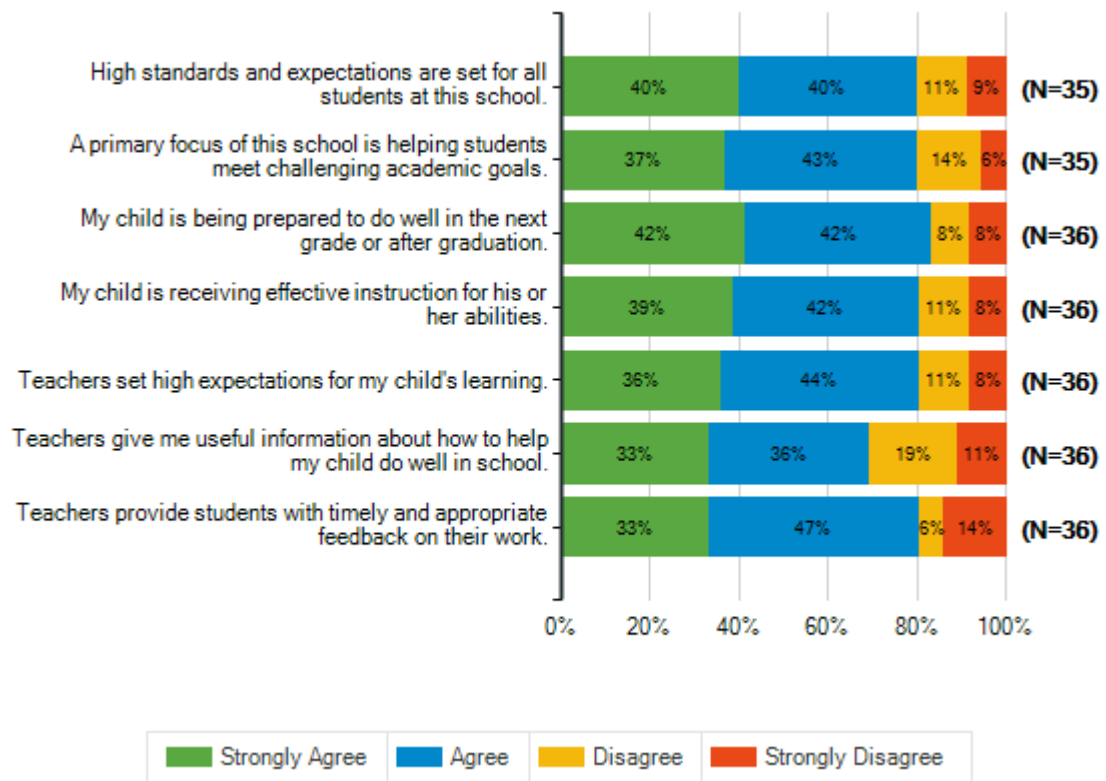
**Q3. How strongly do you agree or disagree with the following statements?**

		<b>Strongly Agree</b>	<b>Agree</b>	<b>Disagree</b>	<b>Strongly Disagree</b>	<b>Total Responses</b>
(a)	This school makes my child feel like he or she belongs and is supported.	15 42%	15 42%	4 11%	2 6%	36
(b)	If students in this school have a problem, teachers will listen and help.	9 25%	20 56%	5 14%	2 6%	36
(c)	This school's mission is clearly defined.	14 39%	15 42%	6 17%	1 3%	36
(d)	There are sufficient resources available to support instruction.	12 33%	18 50%	4 11%	2 6%	36
(e)	Staff members use data to help guide decisions.	8 22%	20 56%	6 17%	2 6%	36



<b>Academic Preparation</b>						
<b>Q4. How strongly do you agree or disagree with the following statements?</b>						
		<b>Strongly Agree</b>	<b>Agree</b>	<b>Disagree</b>	<b>Strongly Disagree</b>	<b>Total Responses</b>
(a)	High standards and expectations are set for all students at this school.	14 40%	14 40%	4 11%	3 9%	35
(b)	A primary focus of this school is helping students meet challenging academic goals.	13 37%	15 43%	5 14%	2 6%	35
(c)	My child is being prepared to do well in the next grade or after graduation.	15 42%	15 42%	3 8%	3 8%	36
(d)	My child is receiving effective instruction for his or her abilities.	14 39%	15 42%	4 11%	3 8%	36
(e)	Teachers set high expectations for my child's learning.	13 36%	16 44%	4 11%	3 8%	36
(f)	Teachers give me useful information about how to help my child do well in school.	12 33%	13 36%	7 19%	4 11%	36
(g)	Teachers provide students with timely and appropriate feedback on their work.	12 33%	17 47%	2 6%	5 14%	36

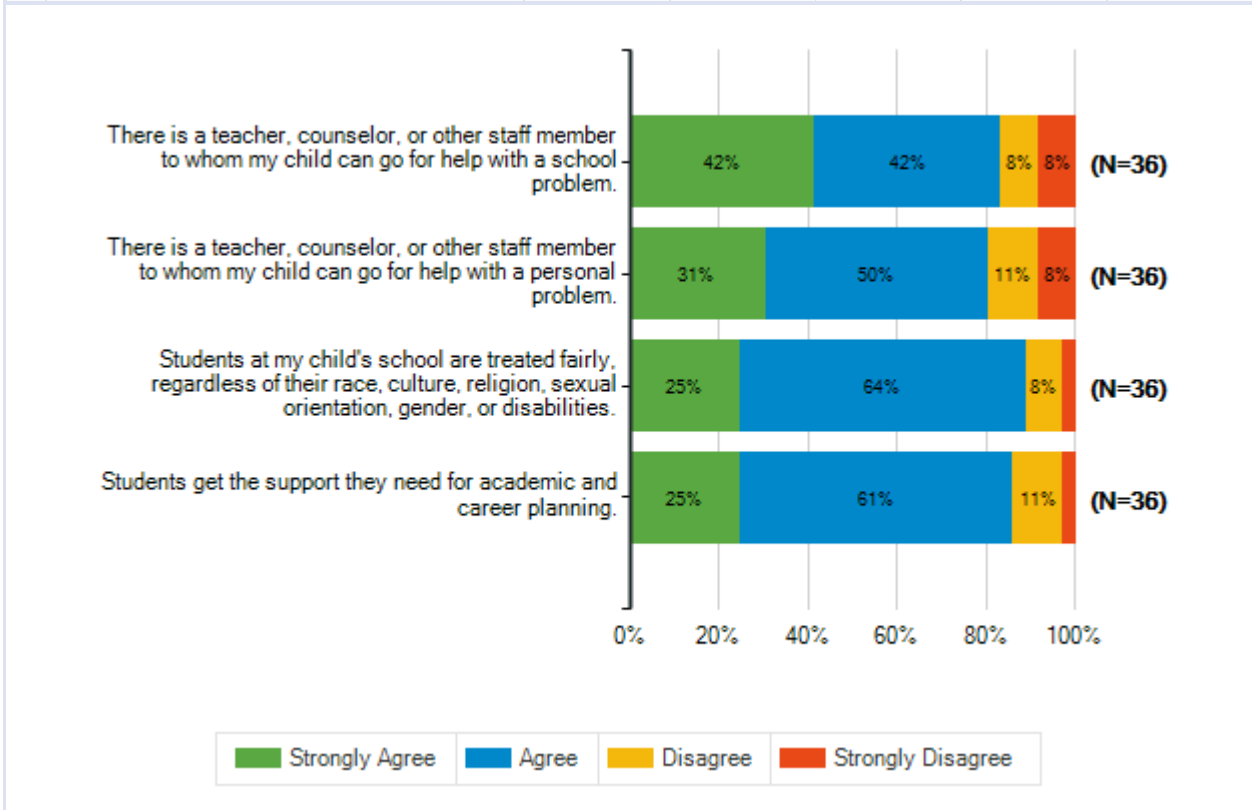
Special School District of St. Louis County  
 2018-19 Climate Survey Parents/Guardians – SSD Schools



**Student Support**

**Q5. How strongly do you agree or disagree with the following statements?**

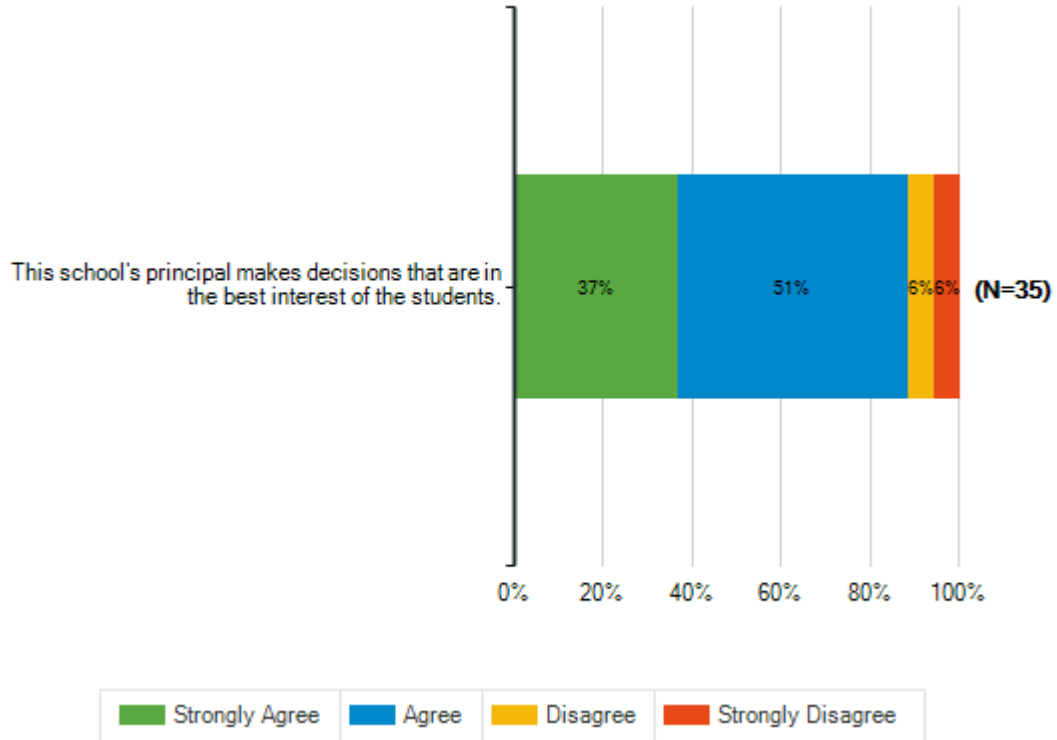
		<b>Strongly Agree</b>	<b>Agree</b>	<b>Disagree</b>	<b>Strongly Disagree</b>	<b>Total Responses</b>
(a)	There is a teacher, counselor, or other staff member to whom my child can go for help with a school problem.	15 42%	15 42%	3 8%	3 8%	36
(b)	There is a teacher, counselor, or other staff member to whom my child can go for help with a personal problem.	11 31%	18 50%	4 11%	3 8%	36
(c)	Students at my child's school are treated fairly, regardless of their race, culture, religion, sexual orientation, gender, or disabilities.	9 25%	23 64%	3 8%	1 3%	36
(d)	Students get the support they need for academic and career planning.	9 25%	22 61%	4 11%	1 3%	36



**School Principal**

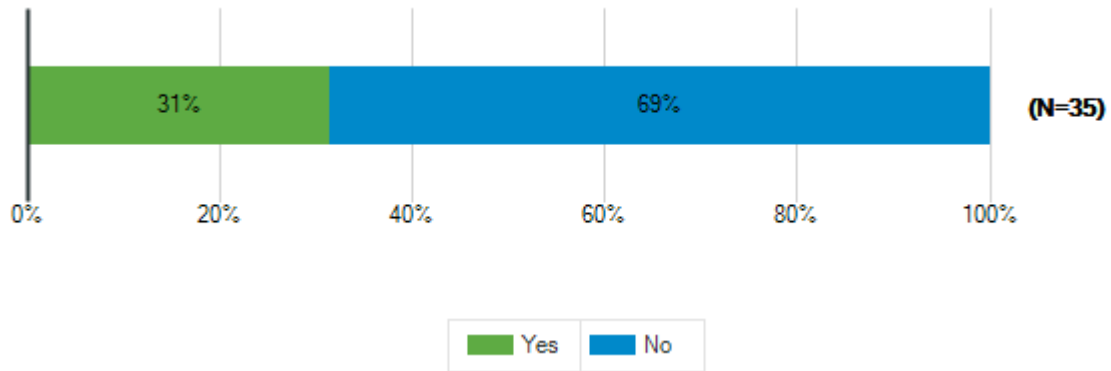
**Q6. How strongly do you agree or disagree with the following statement?**

		<b>Strongly Agree</b>	<b>Agree</b>	<b>Disagree</b>	<b>Strongly Disagree</b>	<b>Total Responses</b>
(a)	This school's principal makes decisions that are in the best interest of the students.	13 37%	18 51%	2 6%	2 6%	35



**Q7. Have you had an issue or concern to discuss with the principal or assistant principal this school year?**

Responses	Count	%
Yes	11	31%
No	24	69%
<b>Total Responses</b>	<b>35</b>	

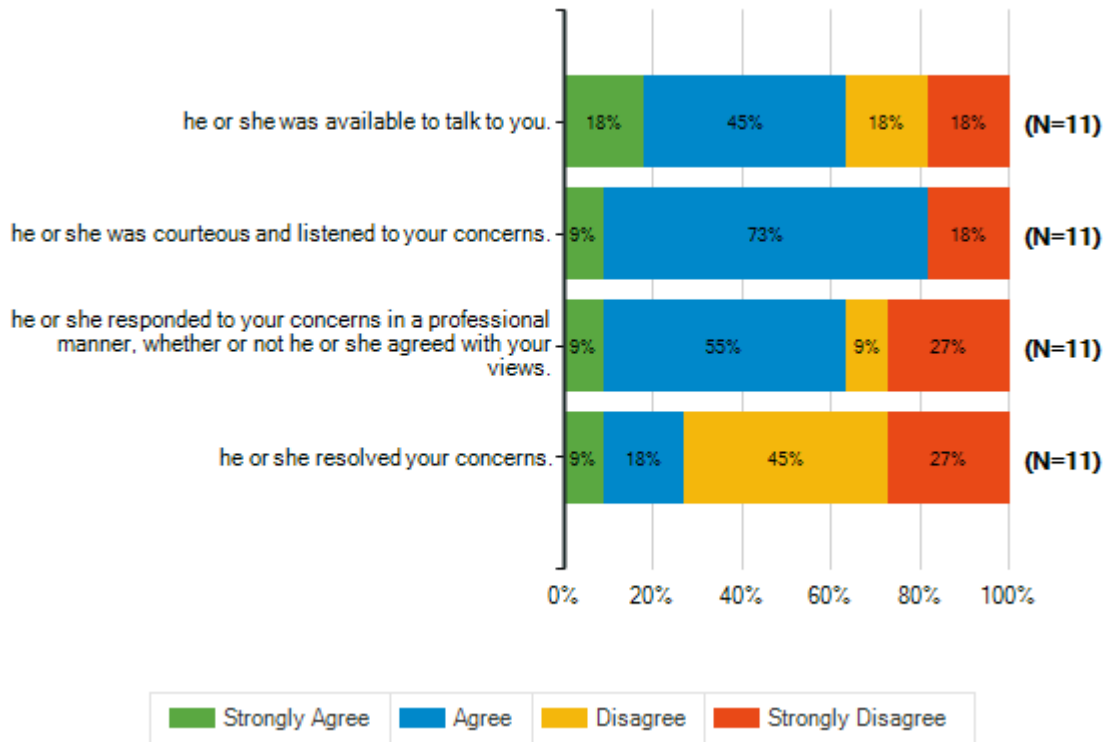




**How strongly do you agree or disagree with the following statements?**

**Q8. When you have had an issue or a concern to discuss with the principal or assistant principal ...**

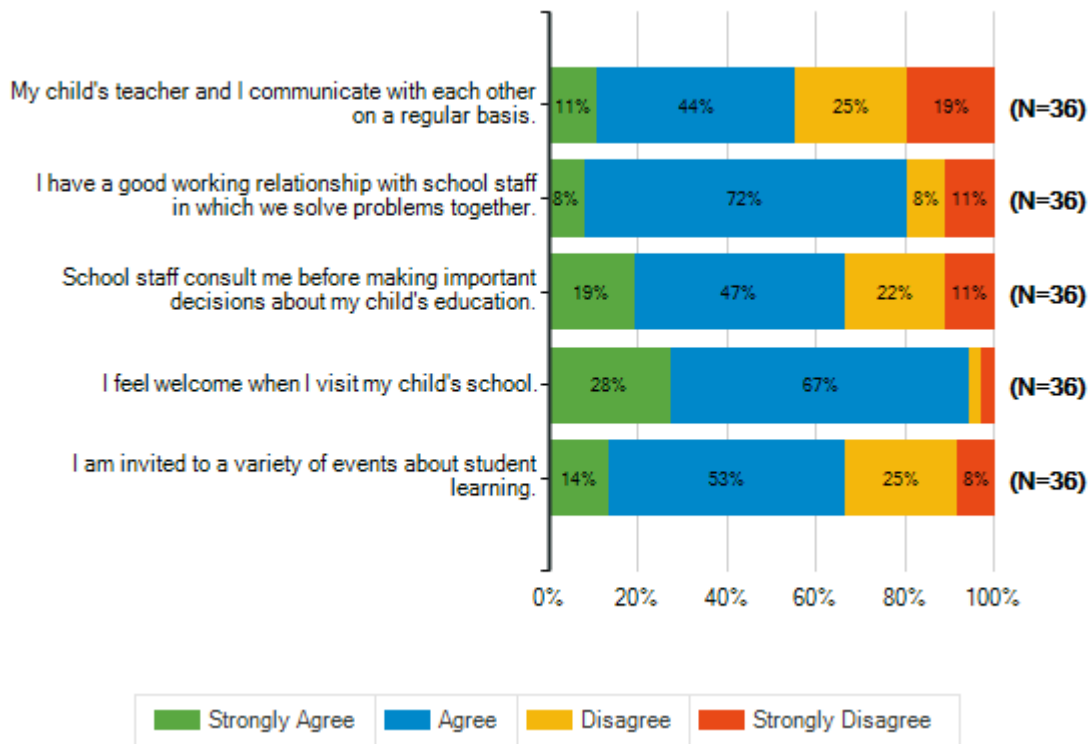
	Strongly Agree	Agree	Disagree	Strongly Disagree	Total Responses
(a) he or she was available to talk to you.	2 18%	5 45%	2 18%	2 18%	11
(b) he or she was courteous and listened to your concerns.	1 9%	8 73%	0 0%	2 18%	11
(c) he or she responded to your concerns in a professional manner, whether or not he or she agreed with your views.	1 9%	6 55%	1 9%	3 27%	11
(d) he or she resolved your concerns.	1 9%	2 18%	5 45%	3 27%	11



**Parent and Family Engagement**

**Q9. How strongly do you agree or disagree with the following statements?**

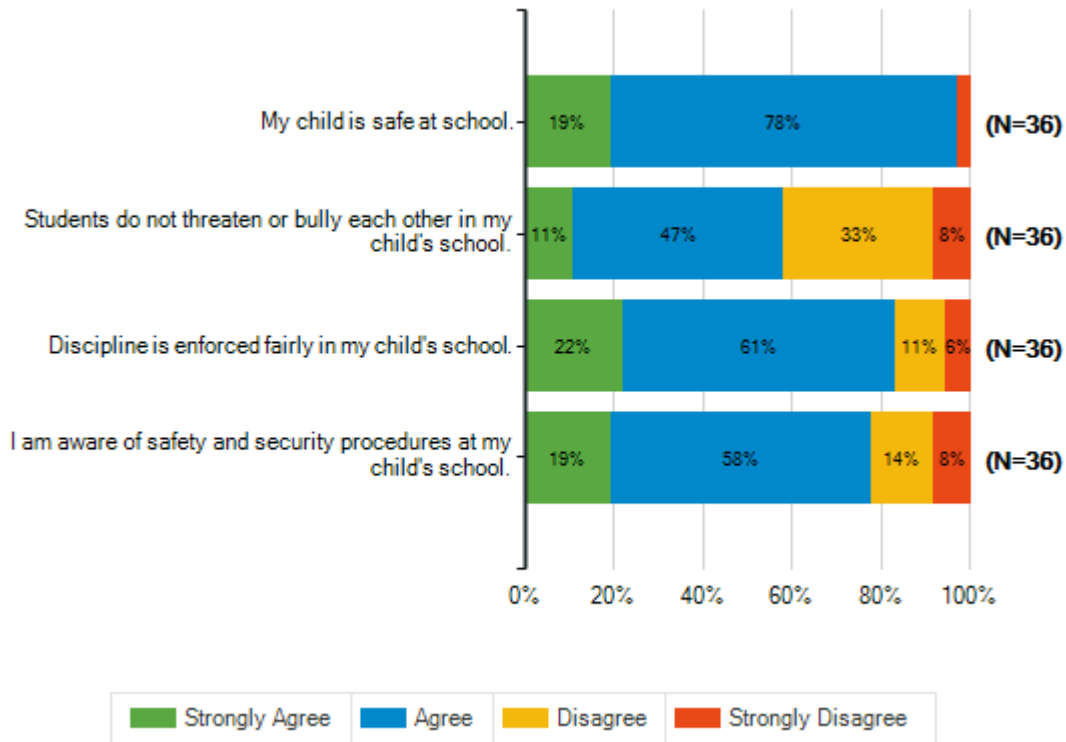
		<b>Strongly Agree</b>	<b>Agree</b>	<b>Disagree</b>	<b>Strongly Disagree</b>	<b>Total Responses</b>
(a)	My child's teacher and I communicate with each other on a regular basis.	4 11%	16 44%	9 25%	7 19%	36
(b)	I have a good working relationship with school staff in which we solve problems together.	3 8%	26 72%	3 8%	4 11%	36
(c)	School staff consult me before making important decisions about my child's education.	7 19%	17 47%	8 22%	4 11%	36
(d)	I feel welcome when I visit my child's school.	10 28%	24 67%	1 3%	1 3%	36
(e)	I am invited to a variety of events about student learning.	5 14%	19 53%	9 25%	3 8%	36



**Safety and Behavior**

**Q10. How strongly do you agree or disagree with the following statements?**

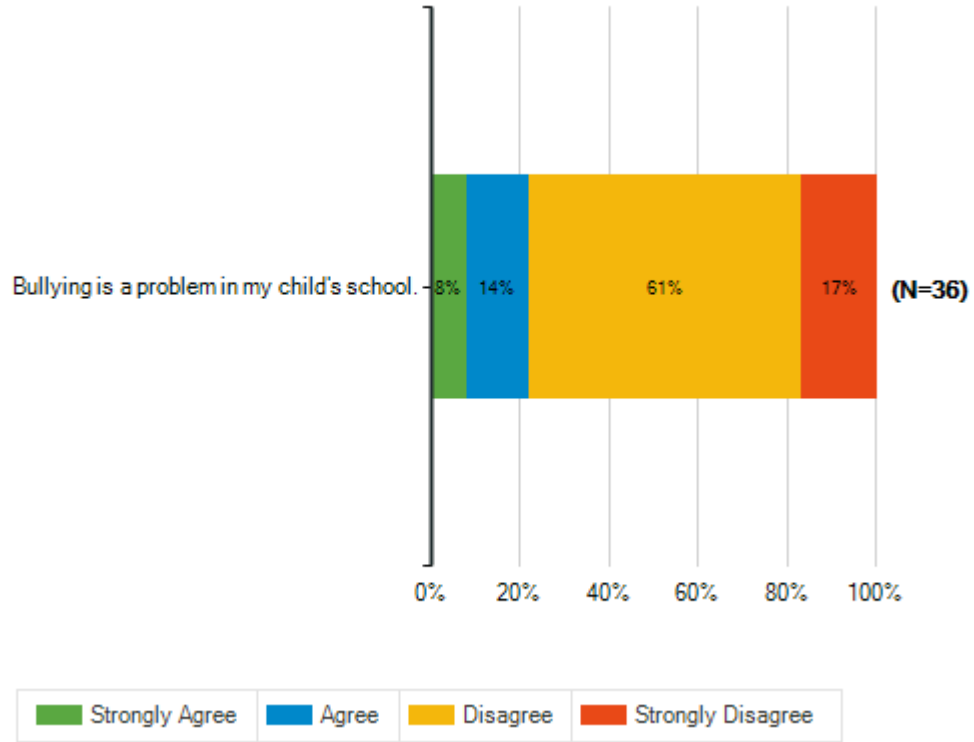
	Strongly Agree	Agree	Disagree	Strongly Disagree	Total Responses
(a) My child is safe at school.	7 19%	28 78%	0 0%	1 3%	36
(b) Students do not threaten or bully each other in my child's school.	4 11%	17 47%	12 33%	3 8%	36
(c) Discipline is enforced fairly in my child's school.	8 22%	22 61%	4 11%	2 6%	36
(d) I am aware of safety and security procedures at my child's school.	7 19%	21 58%	5 14%	3 8%	36



**Safety and Behavior**

**Q11. How strongly do you agree or disagree with the following statement?**

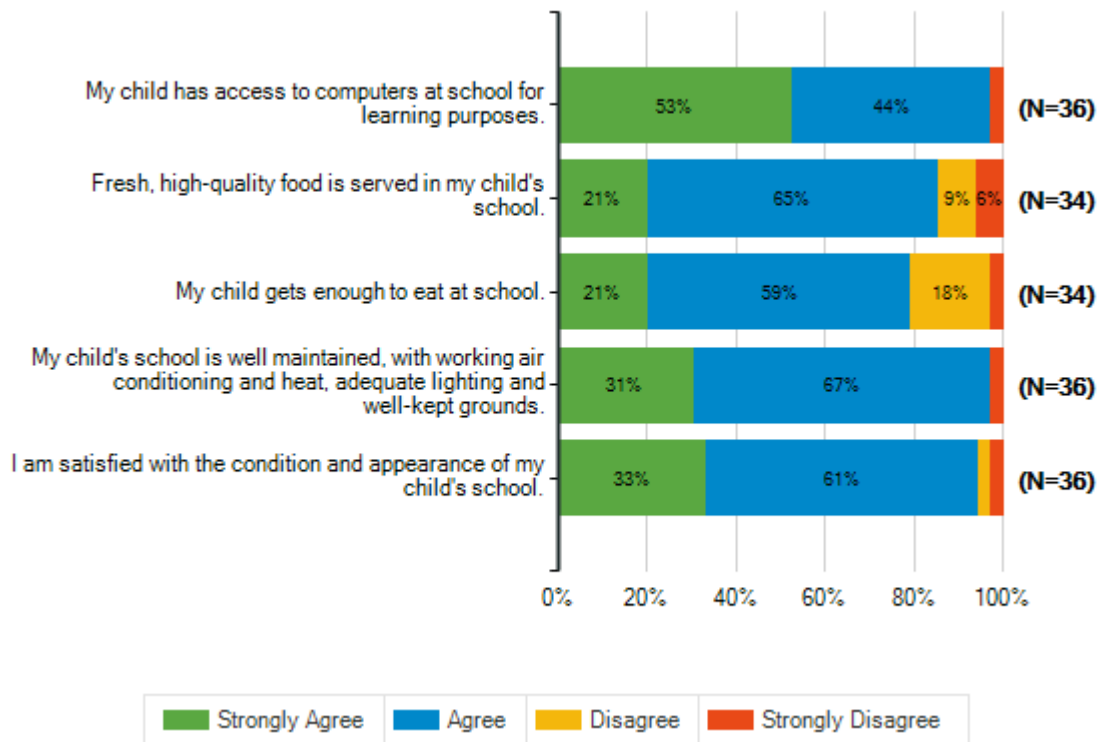
	<b>Strongly Agree</b>	<b>Agree</b>	<b>Disagree</b>	<b>Strongly Disagree</b>	<b>Total Responses</b>
(a) Bullying is a problem in my child's school.	3 8%	5 14%	22 61%	6 17%	36

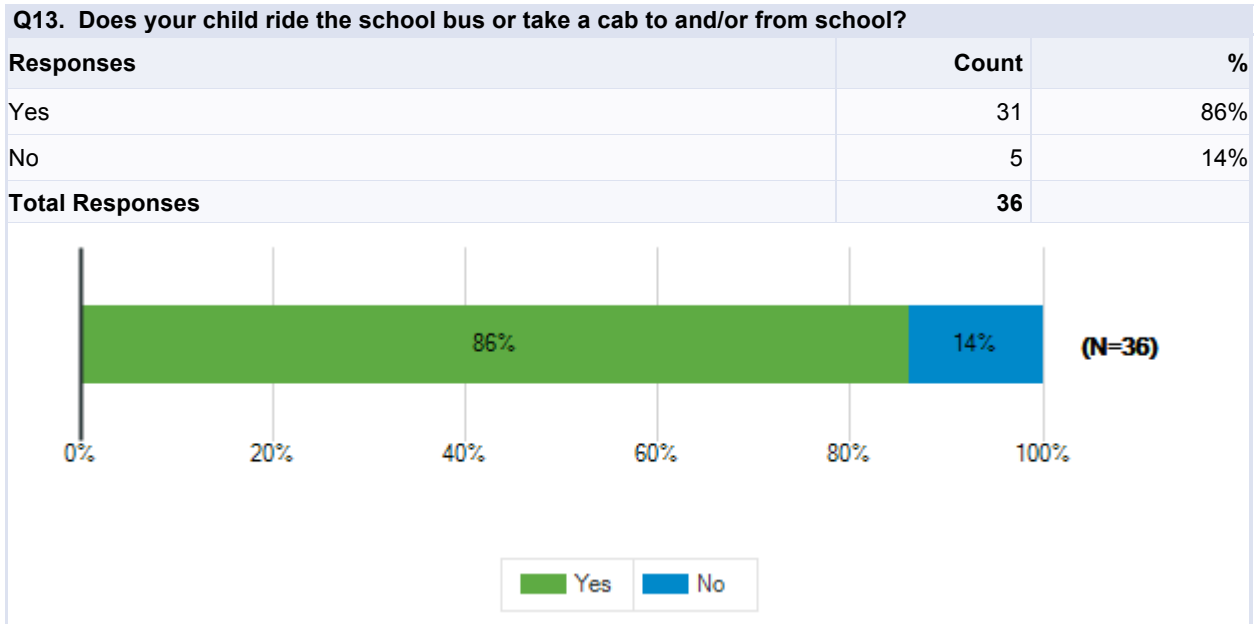


**School Operations**

**Q12. How strongly do you agree or disagree with the following statements?**

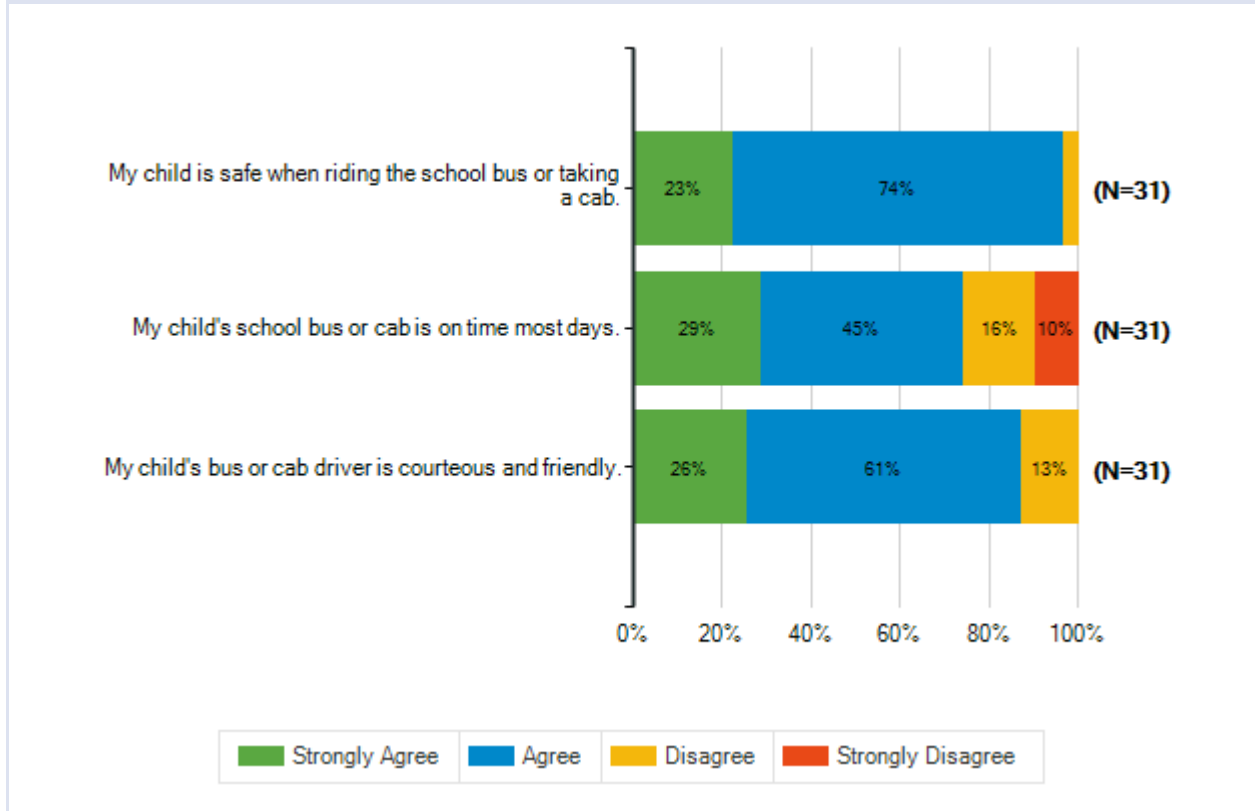
		<b>Strongly Agree</b>	<b>Agree</b>	<b>Disagree</b>	<b>Strongly Disagree</b>	<b>Total Responses</b>
(a)	My child has access to computers at school for learning purposes.	19 53%	16 44%	0 0%	1 3%	36
(b)	Fresh, high-quality food is served in my child's school.	7 21%	22 65%	3 9%	2 6%	34
(c)	My child gets enough to eat at school.	7 21%	20 59%	6 18%	1 3%	34
(d)	My child's school is well maintained, with working air conditioning and heat, adequate lighting and well-kept grounds.	11 31%	24 67%	0 0%	1 3%	36
(e)	I am satisfied with the condition and appearance of my child's school.	12 33%	22 61%	1 3%	1 3%	36





**Q14. How strongly do you agree or disagree with the statements below?**

		<b>Strongly Agree</b>	<b>Agree</b>	<b>Disagree</b>	<b>Strongly Disagree</b>	<b>Total Responses</b>
(a)	My child is safe when riding the school bus or taking a cab.	7 23%	23 74%	1 3%	0 0%	31
(b)	My child's school bus or cab is on time most days.	9 29%	14 45%	5 16%	3 10%	31
(c)	My child's bus or cab driver is courteous and friendly.	8 26%	19 61%	4 13%	0 0%	31

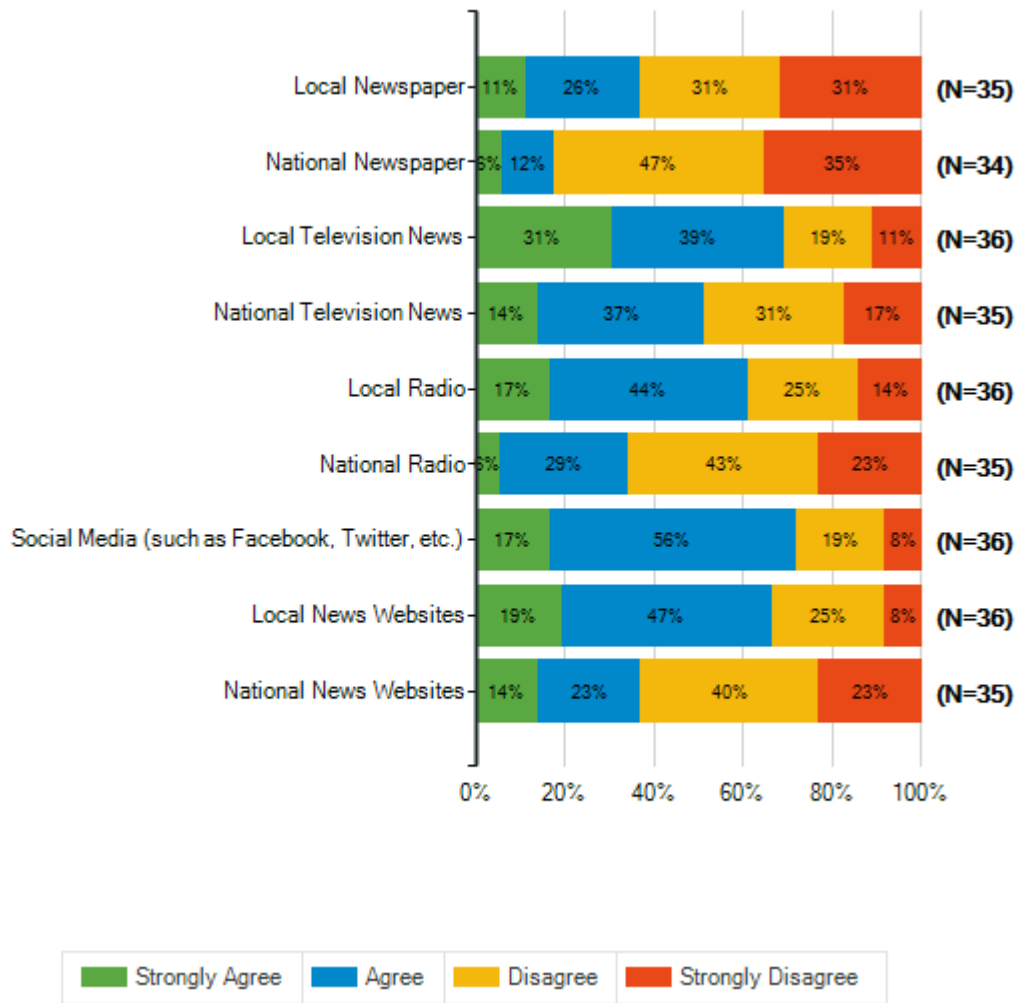


**Q15. Please indicate the extent to which you agree or disagree that you use the following tools to get general information on a daily basis.**

		<b>Strongly Agree</b>	<b>Agree</b>	<b>Disagree</b>	<b>Strongly Disagree</b>	<b>Total Responses</b>
(a)	Local Newspaper	4 11%	9 26%	11 31%	11 31%	35
(b)	National Newspaper	2 6%	4 12%	16 47%	12 35%	34
(c)	Local Television News	11 31%	14 39%	7 19%	4 11%	36
(d)	National Television News	5 14%	13 37%	11 31%	6 17%	35
(e)	Local Radio	6 17%	16 44%	9 25%	5 14%	36
(f)	National Radio	2 6%	10 29%	15 43%	8 23%	35
(g)	Social Media (such as Facebook, Twitter, etc.)	6 17%	20 56%	7 19%	3 8%	36
(h)	Local News Websites	7 19%	17 47%	9 25%	3 8%	36
(i)	National News Websites	5 14%	8 23%	14 40%	8 23%	35

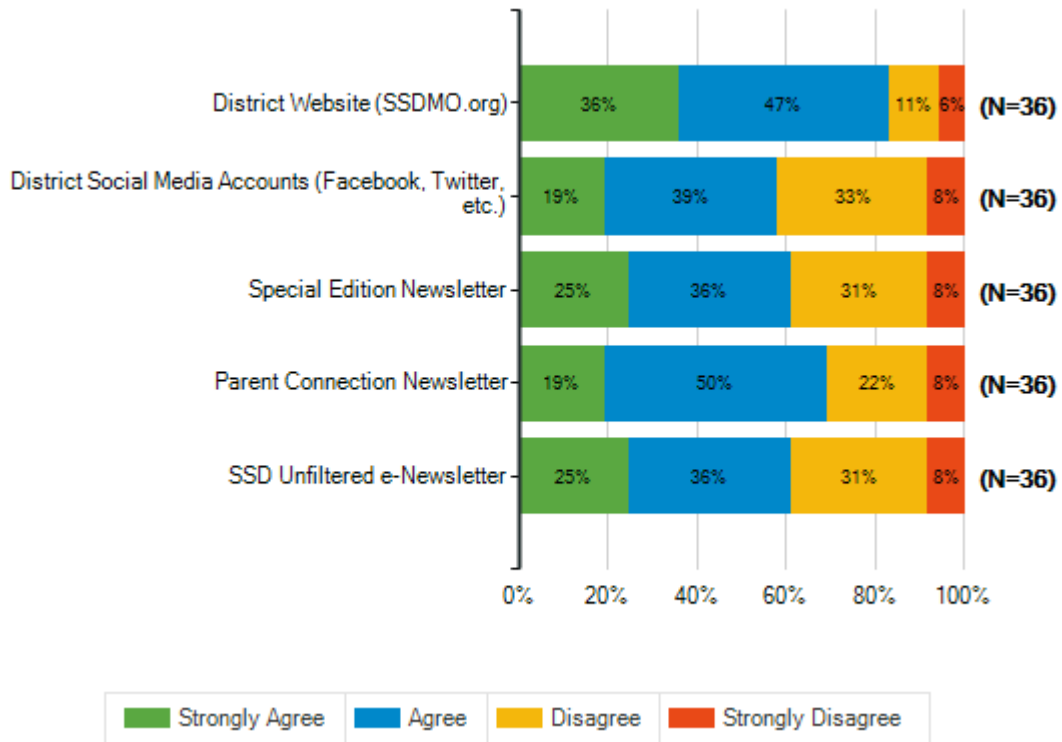


Special School District of St. Louis County  
 2018-19 Climate Survey Parents/Guardians – SSD Schools



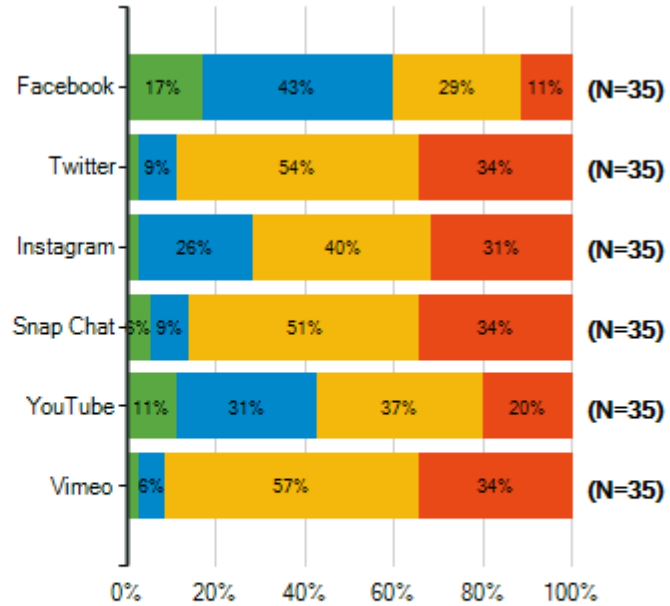
**Q16. Please indicate the extent to which you agree or disagree that you use the following tools to get information about Special School District.**

	Strongly Agree	Agree	Disagree	Strongly Disagree	Total Responses
(a) District Website (SSDMO.org)	13 36%	17 47%	4 11%	2 6%	36
(b) District Social Media Accounts (Facebook, Twitter, etc.)	7 19%	14 39%	12 33%	3 8%	36
(c) Special Edition Newsletter	9 25%	13 36%	11 31%	3 8%	36
(d) Parent Connection Newsletter	7 19%	18 50%	8 22%	3 8%	36
(e) SSD Unfiltered e-Newsletter	9 25%	13 36%	11 31%	3 8%	36



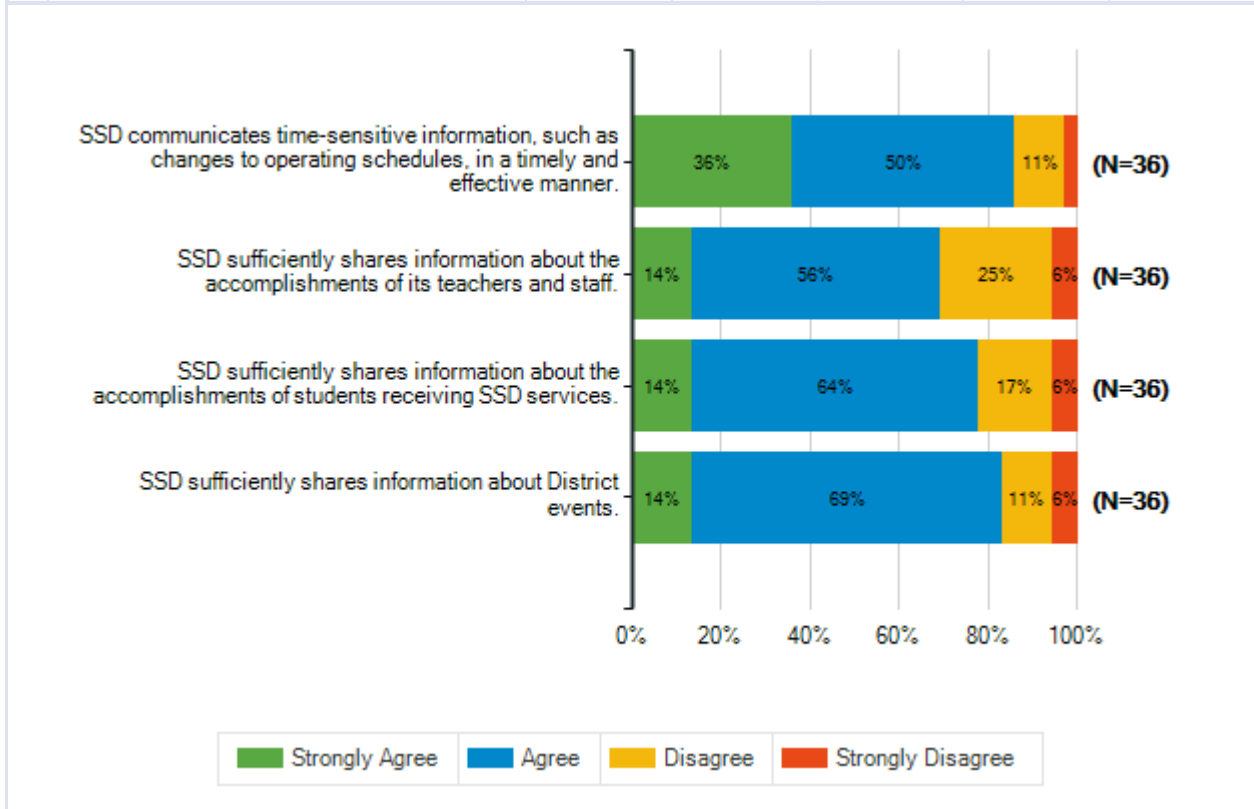
**Q17. Please indicate the extent to which you agree or disagree that you would use the following social media channels to get information about Special School District.**

	Strongly Agree	Agree	Disagree	Strongly Disagree	Total Responses
(a) Facebook	6 17%	15 43%	10 29%	4 11%	35
(b) Twitter	1 3%	3 9%	19 54%	12 34%	35
(c) Instagram	1 3%	9 26%	14 40%	11 31%	35
(d) Snap Chat	2 6%	3 9%	18 51%	12 34%	35
(e) YouTube	4 11%	11 31%	13 37%	7 20%	35
(f) Vimeo	1 3%	2 6%	20 57%	12 34%	35



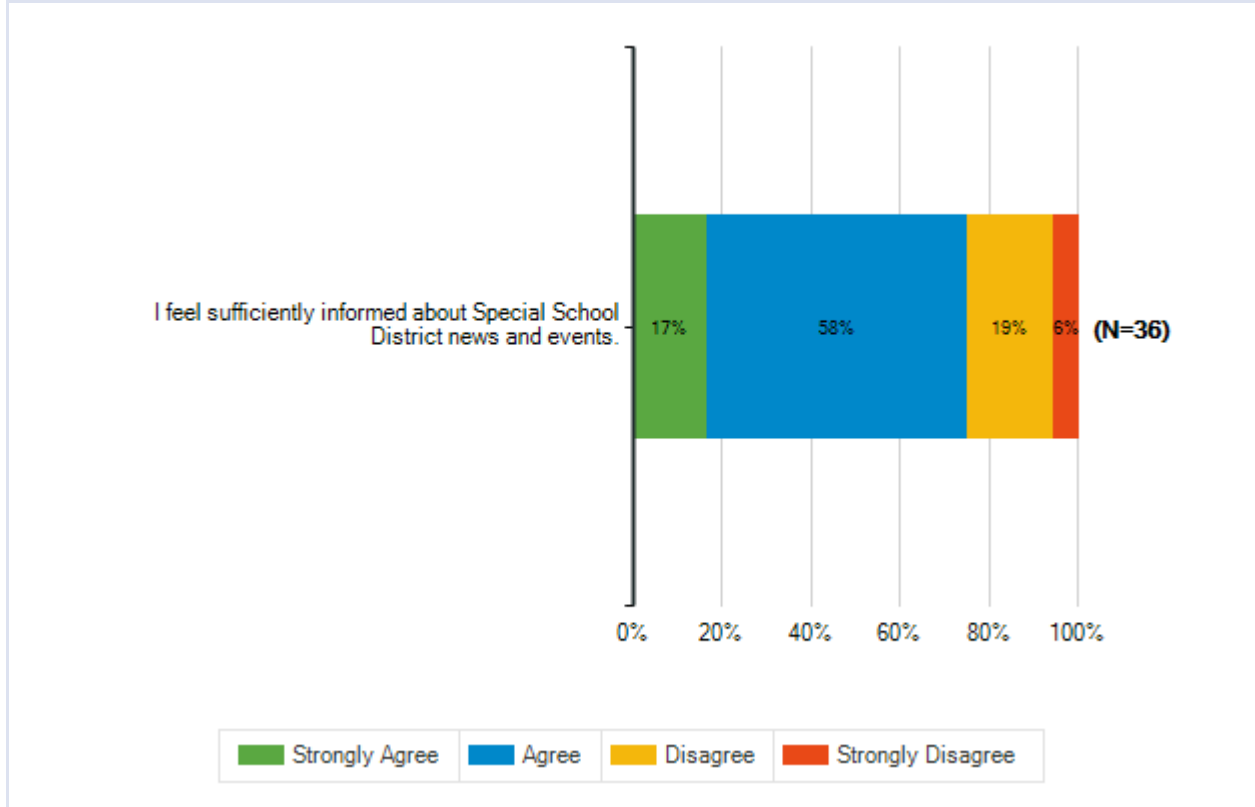
**Q18. Please indicate the extent to which you agree or disagree with each of the following statements.**

		<b>Strongly Agree</b>	<b>Agree</b>	<b>Disagree</b>	<b>Strongly Disagree</b>	<b>Total Responses</b>
(a)	SSD communicates time-sensitive information, such as changes to operating schedules, in a timely and effective manner.	13 36%	18 50%	4 11%	1 3%	36
(b)	SSD sufficiently shares information about the accomplishments of its teachers and staff.	5 14%	20 56%	9 25%	2 6%	36
(c)	SSD sufficiently shares information about the accomplishments of students receiving SSD services.	5 14%	23 64%	6 17%	2 6%	36
(d)	SSD sufficiently shares information about District events.	5 14%	25 69%	4 11%	2 6%	36



**Q19. Please indicate the extent to which you agree or disagree with the following statement.**

		<b>Strongly Agree</b>	<b>Agree</b>	<b>Disagree</b>	<b>Strongly Disagree</b>	<b>Total Responses</b>
(a)	I feel sufficiently informed about Special School District news and events.	6 17%	21 58%	7 19%	2 6%	36



**Q21. Students receive grades of A, B, C, D, or F to report the quality of their work. What grade would you give the overall quality of your child's school? On this scale, an A is outstanding, C is average and F is failing.**

Responses	Count	%
A	13	36%
B	16	44%
C	6	17%
D	1	3%
F	0	0%
<b>Total Responses</b>	<b>36</b>	

