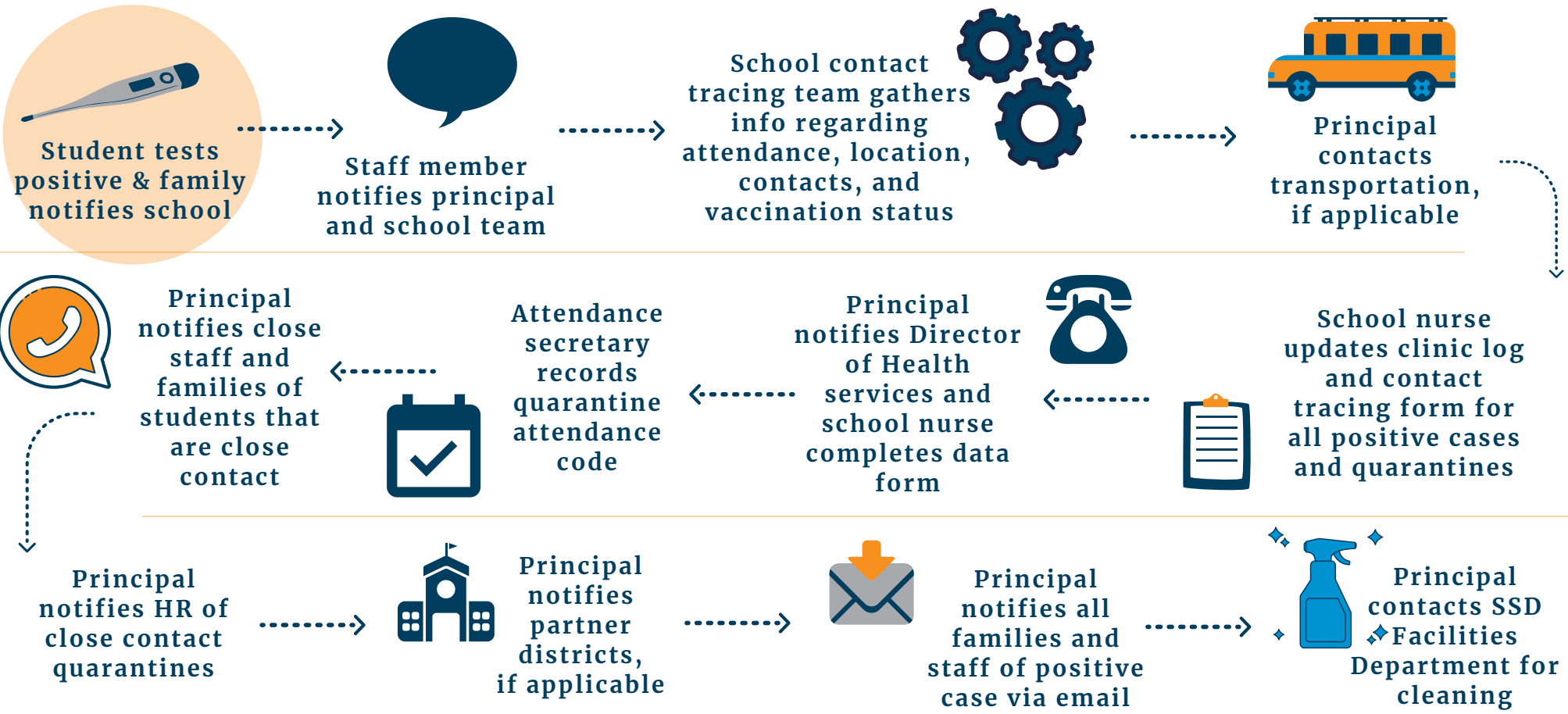


# COVID-19 Contact Tracing

Student at SSD Schools/Programs



## Information to Know

**Infectious Period:**  
48 hours before or 10 days after symptoms develop

**Exposure:**  
Within 3-6 feet for 15+ minutes

- Schools Keep These Records:**
- Seating charts
  - Log/Classroom lists
  - Staff members' assigned locations
  - Bus seating charts